



**Corporate Office:**

Near Laxmi Narayan Temple, Alupur, O. T. Road  
Balasore - 756001, Odisha  
Ph : 7205330222

**Site Address:**

Beside Palm Garden Kalyan Mandap  
Kuruda, Balasore - 756056, Odisha  
Ph : 7205330222

[sales@supratikinfraventures.com](mailto:sales@supratikinfraventures.com)  
[www.supratikinfraventures.com](http://www.supratikinfraventures.com)

Architect  
**The Design Inn. Studio**

Brochure Designer  
**Do.net**

The brochure is not a legal document. It has been produced for the general promotion and the development and for no other purpose. All the information contained in this brochure is taken from design intent material and may be subject to further design development. These details so not form any part of any contract and whilst every effort has been made to ensure their accuracy, this cannot be guaranteed and intending purchasers should not rely on them as statements or representation of facts.



**LifeStyle II**

**BALASORE. ODISHA**





---

# Introducing **New Way Of Living**

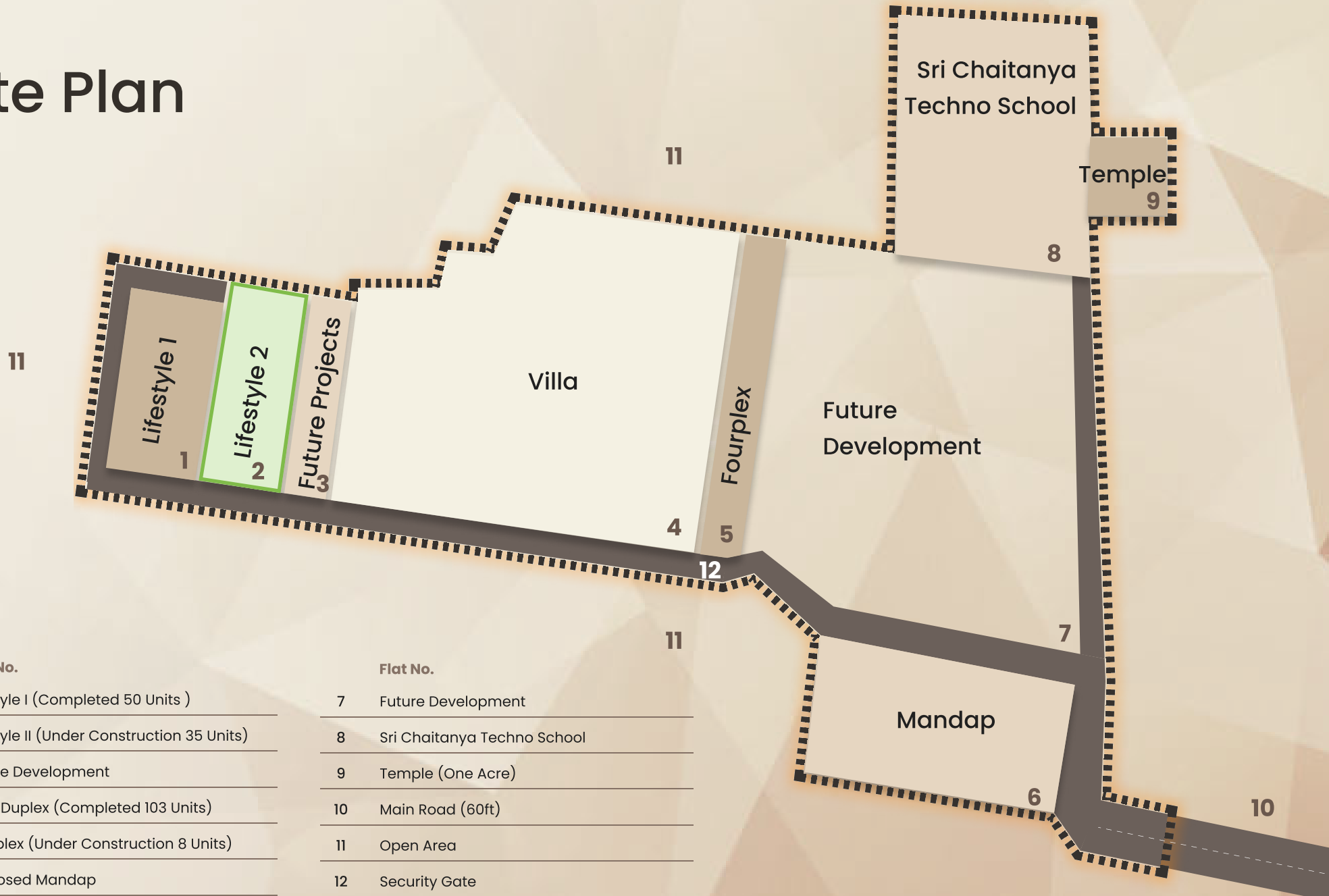
"We Are Excited To Announce The Launch Of Our New Housing Community, Designed To Provide A Fresh And Innovative Approach To Living. Our Homes Are Built With Sustainability In Mind And Offer A Range Of Modern Amenities To Enhance Your Daily Life. From Shared Community Spaces To Convenient Location, We Strive To Create A Welcoming And Dynamic Environment For All Residents. Come See For Yourself And Experience The Benefits Of Our Unique Lifestyle."



"Experience Luxury Living  
With Our Top-Of-The-Line  
Amenities, Modern  
Designs, And Prime  
Locations."

Live In A Complete, Gated Community With A Mix Of  
Residential And Commercial Spaces, Designed For  
Your Ultimate Convenience And Security.

Site Plan



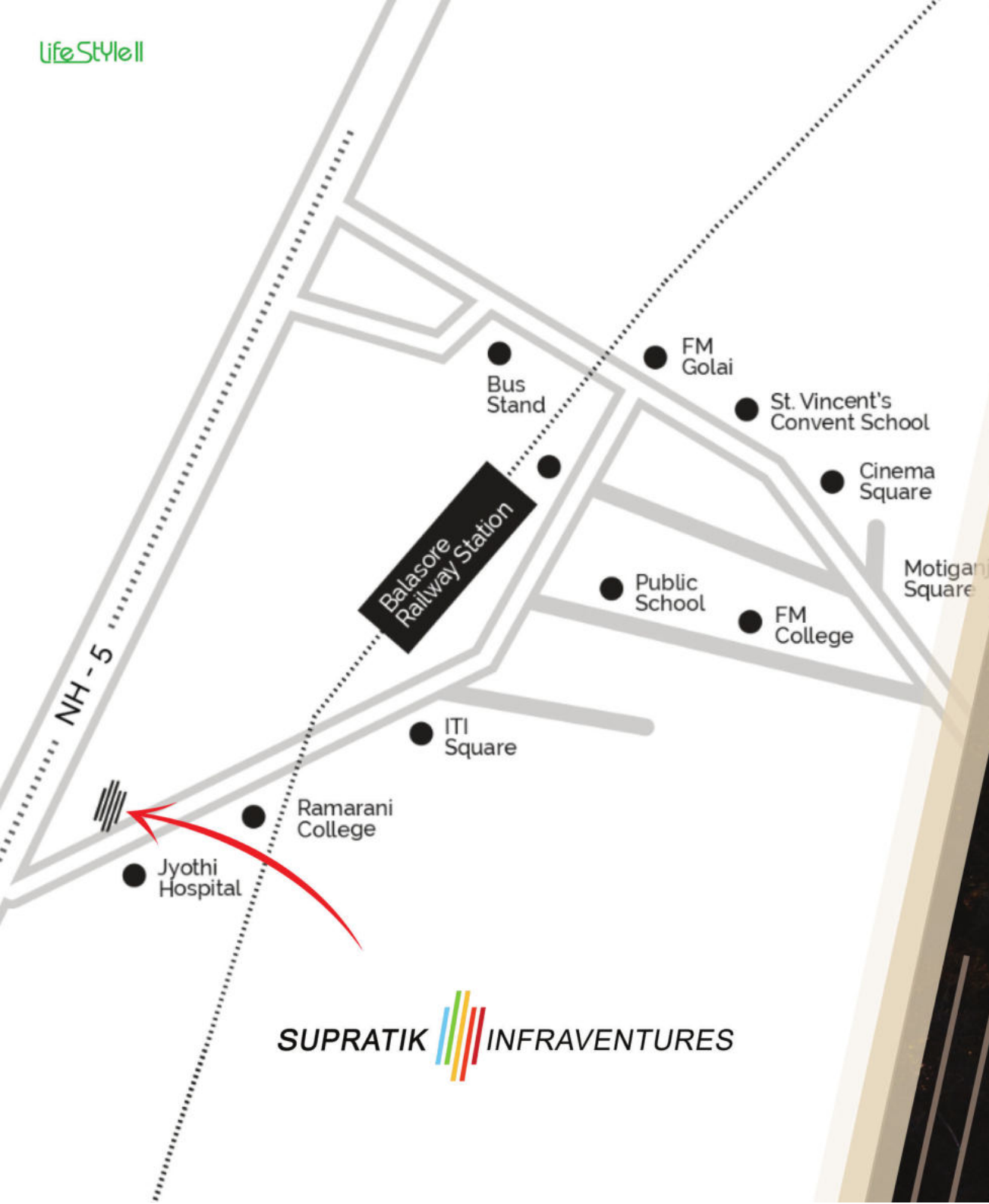


"Creating A Home Is More Than Just Building A Structure, It's About Crafting A Place Where **Memories Are Made And Families Thrive.**"

At Supratik Infraventures, We Strive To Provide Homes That Are Not Only Functional And Beautiful, But Also Sustainable And Accessible To All. We Believe That Everyone Deserves A Place They Can Call Home, And We're Committed To Making That A Reality."







# Let Us Guide You Home..

Situate Close To **NH-5, Chennai Kolkata National Highway**, SUPRATIK LIFESTYLE II Is Located Away From The Congestion Of Teh City And Yet Offers Quick Access To The Neighbouring Area

Landmark	Distance (Km)
SRI CHAITANIA TECHNO SCHOOL	0.1
PROOF ROAD	0.1
JYOTHI HOSPITAL	0.2
SARDAR POLICE STATION	0.8
ITI SQUARE	2.8
KENDRIYA VIDYALAYA STATION	3.5
ST.VINCENT'S SCHOOL	4.7
BUS STAND	5.5
HQ HOSPITAL	5.7
CINEMA SQUARE	5.8
REMUNA GOLAI	6.0
CHANDIPUR	8.8
KHIROCHORA GOPINATH	18.2
	13.4



# Master Plan

Our Development Offers Modern, Open-Concept Floor Plans.



## Flat Area

Our Vision At Supratik Lifestyle II Infrastructure Housing Company Is To Create A World Where Everyone Has Access To Safe, Comfortable,

Type	BHK	Chargeable Area
A	2+2T	1098
B	2+2T	1110
C	2+2T	1103
D	2+2T	1074
E	2+2T	1093
F	2+2T	1103
G	2+2T	1370
H	2+3T	1337
I	2+3T	1534
J	2+3T	1517



# 3 BHK Apartments



Key Plan







03.

(2BHK + 2T)

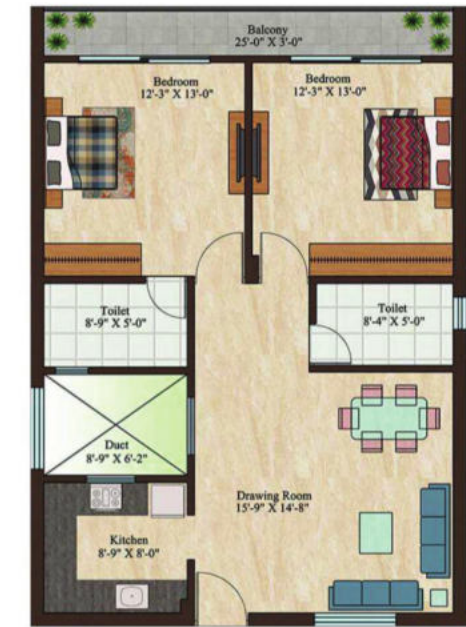
Chargeable Area: 1098 Sqft



04.

(2BHK + 2T)

Chargeable Area: 1110 Sqft



05.

(2BHK + 2T)

Chargeable Area: 1370 Sqft



Key Plan



# 2 BHK Apartments





# Amenities



Yoga Deck



24X7 Power Backup



Roof Landscape



24X7 Water Supply



CCTV Surveillance



Security Gate



Open Sit Out



Dedicated Parking



# Why Supratik?

## Modern Amenities

Enjoy Modern Living With Our State-Of-The-Art Amenities.



## Street Lights

Experience Safe And Secure Living With Our Well-Lit Housing Society, Complete With Street Lights.



## Covered Drain Track

Live In A Clean And Well-Maintained Community With Our Covered Drain Track Housing Society.



## Two way entry

Enjoy Easy Access With Our Two-Way Entry Housing Society



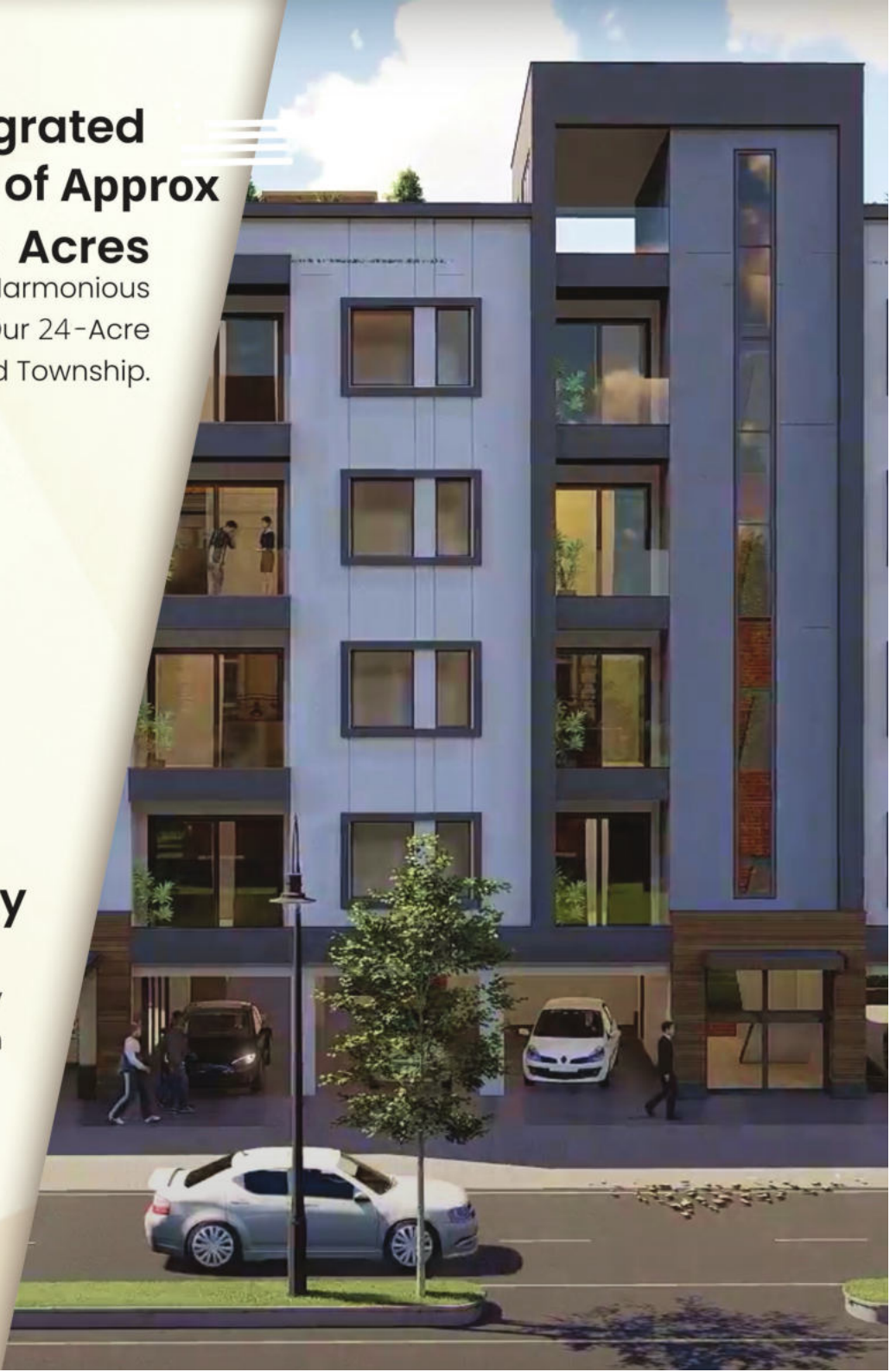
## Spacious Area

Live In Spacious Comfort With  
Our Housing Society.



## Integrated Township of Approx 24 Acres

Experience A Harmonious  
Lifestyle In Our 24-Acre  
Integrated Township.



## Wide Roads

Drive On Wide Roads In Our  
Housing Society



## Connected to City and NH

Experience Spiritual Harmony  
With Our One-Acre Temple In  
Our Housing Society.





# School

## Sri Chaitanya techno school

Our housing society offers the ultimate in convenience and peace of mind with the presence of Sri Chaitanya techno school within the society. Known for its excellent academic curriculum and state-of-the-art facilities, this school provides an ideal educational environment for your child's growth and development. The in-house school eliminates the need for long commutes and ensures that your child is always in a safe and secure environment.





# Temple

"Experience spiritual harmony and tranquility with our in-house temple in our housing society. The temple offers a peaceful and serene environment for spiritual practice and is accessible to all residents. It promotes a sense of community and is a great place to connect with others."



"A Home That Provides Not Only Shelter But Also Spiritual Harmony Is Truly A Sanctuary For The Soul."



# Specifications

## Structure :

Earthquake Resistant RCC Framed structure with first class Fly Ash/ K.B. bricks walls.

## Wall Finishing :

All internal walls of the flats plastered, wall putty treated and painted in pleasing standard uniform color of distemper shade or nearby color shade. Ceiling in white external walls with cement paint.

## Lift :

6 passenger, Kone or equivalent brand.  
Flooring : Internal floors in Vitrified Tiles, common Area in Design Kota Stone.

## Toilet :

Walls-Ceramic tiles up to Door height, Flooring-Anti skid Ceramic tiles, All CP Fittings will be of hindware or parryware or Equivalent brands. All Ceramic items are of white color. Provision for one Exhaust Fan.

## Kitchen :

Polished Black Granite Platform, Steel Sink, Unpolished Vitrified Tile Flooring, Glazed ceramic tiles dado of 2' height from platform level.

## Windows :

Aluminum (Anodized/Powder coated) or UPVC windows or equivalent make.

## Doors :

All door frames of SALWOOD. Main entrance door will be decorative Veneered flush door with lock and eye piece and all inside doors will be commercial type flush door with enamel painting.

## Electrical :

Electrical wiring, Anchor or equivalent make in concealed conduits, provisions of lights and power plugs as well as TV and Telephone outlets in each flat. All electrical accessories are of branded Modular. Miniature Circuit Breaker (MCB) for each room provided at the Main Distribution Box of Flat. A/C Power Points in Bedrooms. Power backup as specified.

## Water Supply :

Supply of water ensured with underground Reservoirs/ sump/ overhead tank/ bore well/ PHED Supply.







# Let Our Family Show **Your Family Home.**

We Understand The Importance Of Finding The Right Home And We Are Committed To Helping You Through The Process. With Years Of Experience In The Real Estate Industry, We Have The Knowledge And Expertise To Guide You Towards The Perfect Property. Our Team Is Dedicated To Providing Personalized Attention And Professional Service To Ensure That Your Home Buying Journey Is As Smooth And Stress-Free As Possible. We Look Forward To The Opportunity To Work With Your Family And Help You Find Your Dream Home.

---